



HOW TO GET INTO GRADUATE SCHOOL

Arnold Apostol & Mandy Ramnaraine



AGENDA

- The Graduate School Experience
- Finding a Graduate School
- Application Process
- Typical Application Timeline
- Funding Opportunities
- Guest speakers
- Q & A



THE GRADUATE SCHOOL EXPERIENCE

UNDERGRAD VS GRAD





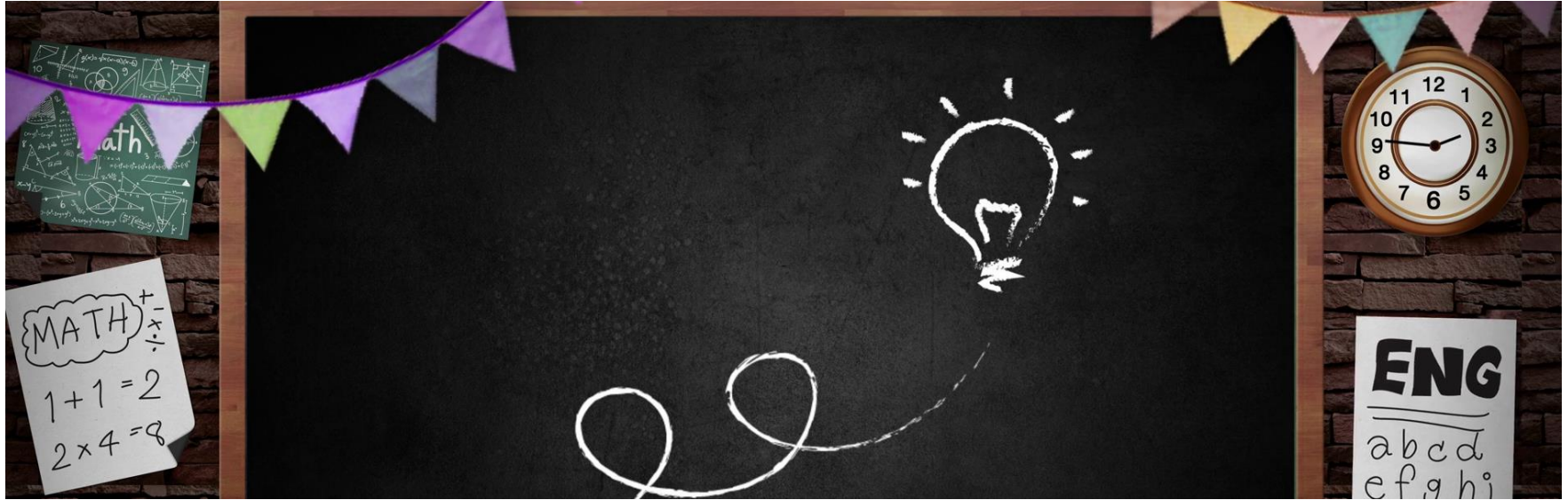
More seminar-type courses, especially at the advanced level



More papers, projects, presentations, but fewer tests



More research-oriented



Increased specialization - narrowing of subject matter studied



Much more independent work; self-discipline is a necessity



Less short-term feedback about how you're doing academically

*3 OPTIONS
TO
CONSIDER*

**Direct
Entry
Ph.D**

**Thesis Based
vs.
Course
Based**

**Length of
the
Program**



FINDING A GRADUATE SCHOOL

5 Ws + H



WHERE TO

Internet Searches

- Use a variety of key words
- Look at school's website
- Search for both specific and broad program names

People

- Mentors
- Current Graduate Students
- Advisors

Professional Associations

- Websites
- Conferences
- Journals

WHY NOW?

To Find Out Important Information on:

■ Required Classes

- Some programs require undergraduate courses as prerequisites

■ Tests and Cut-Off Scores

- Some programs require a test (e.g. GRE, GMAT)
- Cut-off scores narrow down applicant pool for interviews



THE APPLICATION PROCESS

PREPARATION IS KEY



WHAT YOU NEED TO GET

- Application Form
- Letter of recommendations (2-3)
- Personal Statement
- Transcript
- Standardized Test Scores
- Writing and Portfolio Samples

THE PERSONAL STATEMENT

- ▶ Be specific in your goals and intentions
- ▶ Write a separate letter for each school
 - Schools may have different essay instructions; follow them carefully!
 - Mention specific details of the school's program

PERSONAL STATEMENT

■ Typical Essay Requirements

- General Essay: Background, future plans, why this school etc.

■ Research Essay

- Specific research interest
- Questions in research field
- Why these questions?
- Articles you read that spark interest

PERSONAL STATEMENT

- This is a chance to sell yourself. Take your time and write it well!
- Convince the school that they want you as a graduate student
- You may already be ranked before your interview



ASK A PROFESSOR FOR FEEDBACK

THEY HAVE BEEN THERE! THEY MAY EVEN BE ON THE COMMITTEES !



LETTER OF RECOMMENDATION

- A **STRONG** letter should come from a Professor **OUTSIDE** of class
- Letters show your:
 - Problem-solving skills
 - How well you collaborate
 - Your character

LETTER OF RECOMMENDATION

Provide Each Professor

1. **Envelopes** typed with addresses for each school
2. Each school's **required forms** (fill out all information)
3. **Instructions** from each school (seal and sign, mail or return to student)
4. Specific **information** to include (about you, the applicant)
5. **Deadlines** (for returning to you or mailing—NOT the application deadline!)

SENDING YOUR APPLICATIONS

- Mail applications should arrive TWO WEEKS before the deadline
- Write a CV (curriculum vitae) to include all your experience and awards
- Double and triple check your packages to make sure they're completed
- Call and confirm receipt of your application ONE WEEK before the deadline

EXPENSES

- Transcript
- Test scores
- Application fees



APPLICATION TIMELINE

DO NOT PROCRASTINATE!



TIMELINE

August-September

- Browse programs, do basic research
- Meet with faculty members to discuss possible programs
- Start asking for LOR

October

- Determine which programs you will apply to
- Establish a timeline based on deadlines
- Start working on your personal statement

TIMELINE

November

- Determine which programs you will apply to
- Establish a timeline based on deadlines
- Start working on your personal statement

December-January

- Mail Applications (even if early)
- Follow up with the schools on receiving the package



FUNDING OPPORTUNITIES

MAIN POINT: THERE ARE MANY FUNDING OPPORTUNITIES OUT THERE



ONTARIO GRADUATE SCHOLARSHIP

- For: Graduate Students at Masters or Doctoral level
- Amount: \$5, 000 per session¹
- GPA requirement: A- (i.e., 80%) minimum
- When to start applying: October
- Please refer to: <http://cou.on.ca/key-issues/education/graduate-education/ogs/>

¹applicant may be awarded up to 3 sessions with a total of \$15, 000

TRI COUNCIL AWARDS

- One application per year to one granting agency (NSERC, SSHRC, or CIHR).
 - NSERC (Natural Sciences & Engineering) see: http://nserc-crsng.gc.ca/Students-Etudiants/index_eng.asp. They have awards for undergrad, & post-grad students!
 - SSHRC (Social Sc & Humanities) see: <http://www.sshrc-crsh.gc.ca/home-accueil-eng.aspx>
 - CIHR Health see: <http://www.cihr-irsc.gc.ca/e/193.html>
 - All three offer Canada Graduate Scholarships (CGS) to *hard-working and informed* applicants at each level (master's and doctoral)
- Eligibility:
 - GPA of at least 80% (8.0 or A-) in each of last two years of studies

HEART AND STROKE FOUNDATION MASTER'S STUDENTSHIP AWARD

- Value¹: \$ 36,000
- launch: "late June of each year"
- Eligibility:
 - Canadian Citizen
 - Full Time Research in "**heart disease and stroke** across the four health research themes (basic biomedical, clinical, health services/systems, and social, cultural, environmental and population health)"
 - Minimum grade of 80% or A- in last 2 years of studies
- For more specific information, refer to: <http://www.hsf.ca/research/en/award-administration>

¹ "The maximum dollar amount is \$100K/year for a maximum duration of three years." This amt. covers equipments, student stipend, etc. See http://www.hsf.ca/research/sites/default/files/E-FAQ%202019-2020_FINAL.pdf

FOR MORE INFORMATION

- Remember OSAP! (If you don't know, see <http://osap.gov.on.ca>)
- See: <http://www.cihr-irsc.gc.ca/e/193.html> for Health-topic-related Research
- See: <http://www.sshrc-crsh.gc.ca/home-accueil-eng.aspx> for Social Sciences & Humanities
- See: http://nserc-crsng.gc.ca/Students-Etudiants/index_eng.asp. They have awards for undergrad, & postgrad students

GUEST SPEAKERS

- Professor **Stephen Connor** (Biology)
- Professor **Mark Bayfield** (Biology)
- **Vrati Mehra** (MSc Candidate)