



STUDENT RESOURCES

BETHUNE COLLEGE & YORK UNIVERSITY

Click to edit Master text styles
Second level
Third level
Fourth level



Fifth level

Created by: Sarah Hanif

Presented by: Sarah Hanif, Maansi Malhotra and Alexei Muravsky

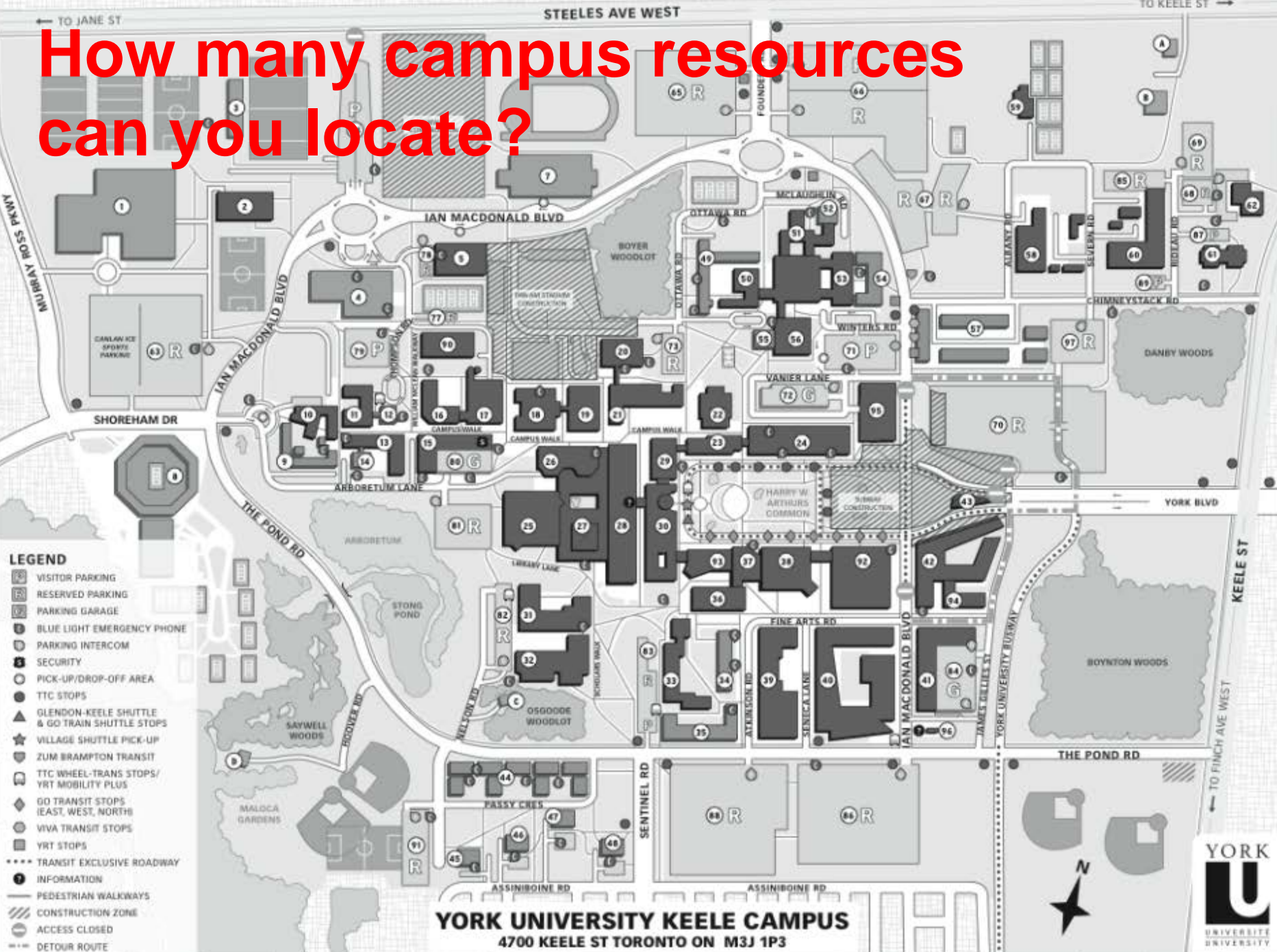
Bethune College Basic Frosh Leader Training
Bethune College Council and Student Ombuds Services
Sunday, June 29th, 2014

Student Ombuds Services (SOS)

bethune.yorku.ca/sos



How many campus resources can you locate?



- LEGEND**
- VISITOR PARKING
 - RESERVED PARKING
 - PARKING GARAGE
 - BLUE LIGHT EMERGENCY PHONE
 - PARKING INTERCOM
 - SECURITY
 - PICK-UP/DROP-OFF AREA
 - TTC STOPS
 - GLENDON-KEELE SHUTTLE & GO TRAIN SHUTTLE STOPS
 - VILLAGE SHUTTLE PICK-UP
 - ZUM BRAMPTON TRANSIT
 - TTC WHEEL-TRANS STOPS/ YRT MOBILITY PLUS
 - GO TRANSIT STOPS (EAST, WEST, NORTH)
 - VIVA TRANSIT STOPS
 - YRT STOPS
 - TRANSIT EXCLUSIVE ROADWAY
 - INFORMATION
 - PEDESTRIAN WALKWAYS
 - CONSTRUCTION ZONE
 - ACCESS CLOSED
 - DETOUR ROUTE

YORK UNIVERSITY KEELE CAMPUS
4700 KEELE ST TORONTO ON M3J 1P3





Bethune College Services

A student asks you:



- 1) I don't have a strong math background, but I will be taking MATH 1505 in the fall term. Where can I get help for this course?

A student asks you:



- 2) I'm getting a little anxious about being part of a big first-year class. What can I do if I don't feel comfortable talking to the prof about any concerns I might have about the course, tests, assignments, etc.?

A student asks you:



3) I am considering going into medical or veterinary school. What are the admission requirements for these schools?



- **Available Bethune College Services**

- Peer Tutoring (PT)
- Peer Assisted Study Sessions (PASS)
- Class Representative (CR)
- Peer Advising (PA)
- Peer Mentoring (PM)
- Student Ambassadors (SA)
- Graduate Peer Mentor (GPM)

Bethune College Services



- **SOS Peer Tutoring**

- Location(s) (summer): LSB 104
- Drop-in academic support for core science courses
- Help students understand difficult course concepts
- SOS Tutor Registry: <http://sos.info.yorku.ca/tutor-registry>
 - Contact information of individuals providing paid tutoring
- Tutees Dos and Don'ts: <http://bethune.yorku.ca/tutoring/attendees/>

Bethune College Services



- **SOS Peer Assisted Study Sessions (PASS)**
 - Informal review study sessions for science courses
 - Encourage group work to improve understanding of the course material
 - Attendees Dos and Don'ts: <http://sos.info.yorku.ca/advisee-dos-and-donts/>

<http://bethune.yorku.ca/pass>

Bethune College Services



- **SOS Class Representative (CR)**

- CRs assigned to major science courses and act as liaisons between the professor and students
- Provide general feedback and bring any concerns that arise to the attention of the course instructor
- Form study group sessions
- CR Dos and Don'ts: <http://bethune.yorku.ca/classreps/attendees/>

<http://bethune.yorku.ca/classreps>

Bethune College Services



- **SOS Peer Advising (PA)**

- Office: BC 208
- Advising on school related issues
- Professional and graduate schools seminars
- Meet the prof events
- Advisees Dos and Don'ts: <http://bethune.yorku.ca/advising/advisees/>

Bethune College Services



- **SOS Peer Mentoring (PM)**

- Assist first-year students adapt to university life
 - Do not make decisions for the students!
- Mentors play an important role during academic orientations
- Mentees Dos and Don'ts: <http://bethune.yorku.ca/mentoring/mentees/>

<http://bethune.yorku.ca/mentoring>

Bethune College Services



- **SOS Student Ambassador (SA)**

- **Goal:** Act as a link between York University and the external community recruiting prospective students
- Promote York University's Science and Engineering programs
 - Ella Pesah (bcsa@yorku.ca)



- **SOS Graduate Peer Mentoring (GPM)**
 - Assist upper-year students in exploring future paths (graduate & professional schools, etc.)
 - Do not make decisions for the students!
 - Setup one-on-one meeting with the upper year students and GPM.
 - BCGPM@yorku.ca
 - Mentees Dos and Don'ts: <http://sos.info.yorku.ca/advisee-dos-and-donts/>

Bethune College Services



- **Bethune College Council**

- Office: BC 122
- Assist Bethune affiliated clubs and organizations
- Plan and hold several social events:
 - Bethune Dragon Week
 - Bethune College Formal
 - Trips: Skiing, Cirque Du Soleil

<http://bcc.info.yorku.ca>



- **Learning Skills and Career Centre workshops**
 - Wednesday workshops in BC 203
 - Time Management Skills
 - Math and Science Problem Solving Skills
 - Exam Prep for University Tests and Exams
 - Resume and Cover Letter Writing
 - Job Search Strategies



- **Bethune Writing Centre**

- Location: BC 206 (appointment required)
- Writing Tutor is Robert Fisher
- FREE one-on-one academic writing help to students affiliated with Bethune College
 - Proofreading
 - Organizing the structure of an essay or scientific report
 - How to write an introduction, conclusion, or summary

Bethune College Services



- **Bethune College Courses**

- BC 3000 0.0 Introduction to Peer Leadership
- BC 3010 3.0 Advanced Peer Leadership
- BC 3900 0.0 Peer Leadership Practicum

- **Other Bethune College Courses**

- BC 3030 3.0 Scientific, Technical and Professional Writing

Bethune College Services



- **Bethune College Academic Facebook page**
 - Regular updates and event announcements
 - ‘Like’ Bethune College Academic Community

<https://www.facebook.com/BethuneCollegeAcademicCommunity>

Bethune College Services



- **LinkedIn**

- Bethune College Peer Leaders
- Network with Bethune Peer Leaders and Alumni in a professional setting

https://www.linkedin.com/profile/view?id=300067783&trk=nav_responsive_tab_profile_pic



Bethune College Peer Leaders

1st

Student at York University

North York, Ontario, Canada | Education Management

Education York University

[Send a message](#)

238
connections

★ Relationship

Contact Info

Connected 4 months ago

Background



Skills & Endorsements

Top Skills

9	Student Leadership	+										
7	Academic Advising	+										
7	Academic Tutoring	+										
7	Student Engagement	+										
5	Higher Education	+										
4	Networking	+										



York Academic Services

A student asks you:



- 4) Currently, I'm going through some personal and stressful issues at home. I'm afraid this might affect my studies as I start school in September. Should I just take the fall term off and start school in the winter? Who can I talk to about all this?

A student asks you:



5) I want to change my major from Computer science to Math. Who should I get advice from about this?

Bethune College Services



- **Bethune Academic Advising**

- Advising sessions for Bethune students who need to discuss a personal issue confidentially and privately
- NOT course-specific or degree-specific consultations
- Tanya Da Sylva: Appointment via e-mail

<http://bethune.yorku.ca/services>



- **Faculty Student Academic Advising offices**

- First-year course selection, program requirements, changing majors, university regulations, petitions.
- **Lassonde Student Centre (LAS)**
 - 1012 LAS
 - Engineering, CS, Digital Media, Earth & Space



- **Faculty Student Academic Advising offices**
 - **Science Academic Services (SAS)**
 - 352 Lumbers
 - For Science and Engineering students
 - **Office Student & Academic Services (OSAS)**
 - 019 HNES
 - For KINE and PSYC students

A student asks you:



- 6) I am trying to enroll in a chemistry course but it is full/or has reserved seats. Where should I go to get permission to enroll in this course?



- **Program-specific undergraduate departments**

- Enrolling into a specific course
- Course performance summary for academic petitions
- Final Exam Deferred Standing Agreement forms
- Science departments and locations:

bethune.yorku.ca/help

Electrical Engineering & Computer Science	1003 Lassonde
Earth & Space Sci & Engineering	102 Petrie
Engineering	1012R Lassonde
Biology & Chemistry	102 Life Science Building

<http://bethune.yorku.ca/help>

A student asks you:



7) You mentioned that you took MATH 1505 last year. Can I buy the past tests from you?



- **Academic Science Societies**

- Biology Society - Lumbers 111

(<https://yorku.collegiatelink.net/organization/yubs>)

- Chemistry Society – CB 206

(<http://www.yorku.ca/csy/>)

- Engineering Society – BC 103A

(<https://yorku.collegiatelink.net/organization/EngineeringSociety>)

- Club Infinity – N520 Ross

(<http://clubinfinity.wordpress.com/>)



- **Academic Science Societies**

- Astronomy Club – BC 104

(<http://www.yorku.ca/yuac/>)

- Atmospheric Science Club- BC 114

(<http://www.yorku.ca/yasc/home/>)

- Robot Fighting Club BC366

(<https://yorku.collegiatelink.net/organization/robotfightingclub>)

- Rover Team BC 321

(<https://yorku.collegiatelink.net/organization/RoverTeam>)

A student asks you:



8) I always have a hard time doing research assignments. Where I can go for help? Can you do part of my research report for me? I'm willing to pay you!



- **Steacie Library reference desk**

- Help with: finding online articles, using science databases, RefWorks, citation styles
- Librarians from the Steacie Library also conduct workshops at Bethune College:
 - Everything You Wanted to Know about Lab Reports
 - Get Organized with RefWorks
 - Power Searching in Web of Science
 - Power Searching in Medicine
 - <http://bethune.yorku.ca/events>



- **Learning commons @ Scott Library (2nd floor)**
 - Research Desk
 - How to find, evaluate and use scholarly books, journal articles and e-resources
 - Writing Desk:
Writing analytically, structuring written work
 - Learning Skills Desk:
 - Improving reading and note-taking skills, building critical thinking skills

A student asks you:



- 9) I am applying for a job off campus. Can you please help me write my cover letter? Also, are there any jobs on campus that I can apply for?



- **Career Centre**

- Workshops

- Career exploration, Job search, Professional etiquette, Further education
- <http://www.yorku.ca/careers/services/workshops.htm>

- Individual appointments

- Interview Practice Session, Resumé or Cover Letter Feedback Session
- http://www.yorku.ca/careers/students/individual_appointments.html



- **Career Centre**

- Online Job Posting system

- Search for and apply to on campus and off campus jobs

- <http://www.yorku.ca/careers/onlinesystem/>

- Job advising sessions at Bethune College

- BC 206, Wednesdays 1-4 pm

- http://www.yorku.ca/careers/students/individual_appointments.html#jobsearch_advising



York Non-academic Services



- **Counseling & Disability Services (CDS)**

- Room N 110, Bennett Centre for Student Services
- Counselors available to respond to students
 - Group counseling
 - Individual counseling sessions
- Workshops:
 - Stress Management
 - Mental Health tune up
 - Reducing anxiety

A student asks you:



10) I want to get more involved on campus and build on my leadership skills and experience. Are there any good clubs I can join?



- **Student Community & Leadership Development (SCLD)**
 - Office: S172 Ross
 - Health education and promotion
 - Health Ed Peer Team plans programs on and around campus focusing on health topics
 - Mental Health conference, SafeTalk
 - Leadership development
 - Lectures, events, conferences and retreats
 - Leadership certificate program



- **YUConnect**

- Provides campus involvement opportunities
- Co-curricular record – documents participation in clubs, events and programs
- <http://yuconnect.yorku.ca>

[Home](#)[News](#)[Profile](#)[Events](#)[Roster](#)[Gallery](#)[Documents](#)[Forms](#)

Bethune College Peer Leaders

267 Members | 0 Upcoming Events | 1 Photo Gallery

The Peer Leaders at Bethune College provide peer-based, student-focused, academic resources to promote and foster student engagement, development and success, academically and personally. [Read More...](#)

News



Bethune College Peer Leaders are here to help!

Posted by Jatram Kallidumbil, Bethune College Peer Leaders, October
The Peer Leaders at Bethune College provide peer-based, student-

3	0	4

Summary

Membership pending

Visit Us



Contact Info

207 Bethune College
4700 Keele Street
Toronto, ON M3J 1P6
Canada
nbcacadv@yorku.ca
P:(416) 736-2100 x33940

Primary Contact
Mohammad Khan

Send Message

A student asks you:



11) I want to change my PHYS 1010 lab section. Where is the physics department on campus?



- **York Atlas**

- Phone and email directory for York staff and students
- Quick way to find location of different program departments and professors' offices

<http://mocha.yorku.ca/atlas/servlet/atlas>

International Students

- **York International**

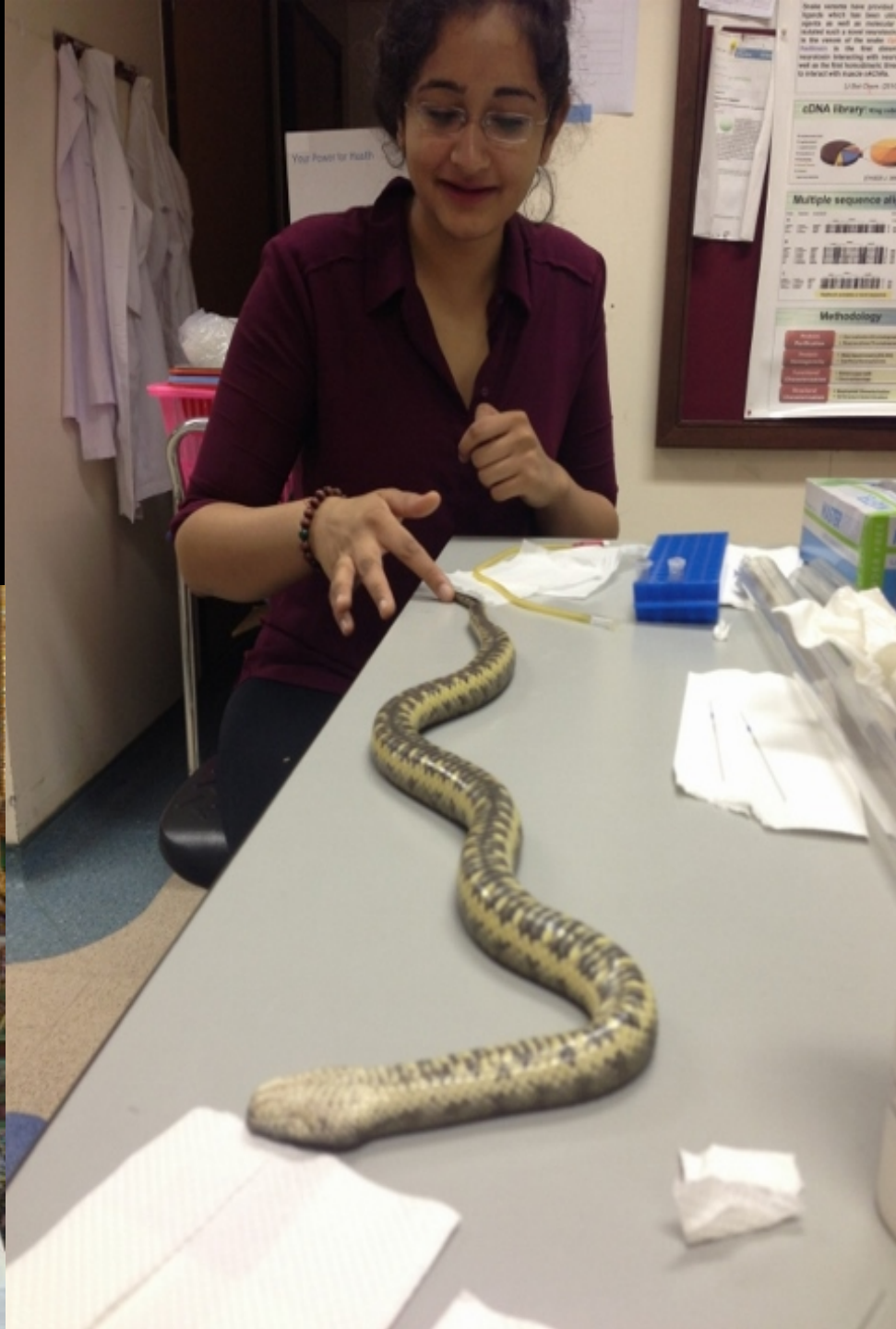
- Provides facilities to international, exchange students and visiting scholars
- Information regarding health insurance, immigration and financial aid

International Students

- **York International**

- Facilitate international student advising and peer mentoring programs
- Help york students to GO GLOBAL!! (ASK ME)

“FROM CULTURE SHOCK TO CULTURE VULTURE”



A student asks you:



- 12) My CHEM1000 lab finishes at 10pm. I live in the York village, but it is pretty far from here. What services can I use to make my commute safer?



- **Security Services**

- goSAFE service

- Safe escort on foot from any on-campus location
- 416-736-5454 or ext. 55454
- Download the goSafe app on your phone



- **Security Services**

- Off-campus Shuttle Bus

- Provides transportation to off-campus housing in the Village
- Runs from Monday to Friday (6pm to 2am)
- Operating schedule:

www.yorku.ca/gosafe/newcampusshuttle.html



Thank You!